



**Peyton Manning
Children's Hospital**

Ascension St. Vincent

**Funding Priorities &
Needs**



About Peyton Manning Children's Hospital

Ascension St. Vincent has been providing compassionate care to children for over 140 years. More than 20 years ago, a group of pediatric specialists began working at Ascension St. Vincent with a goal of providing tertiary-level care in a setting that reflected and advanced the core values and mission of the hospital. The success of these physicians led to the building of a special place meant to focus on the unique needs of children and their families: Peyton Manning Children's Hospital.

Since opening its doors in 2003, Peyton Manning Children's Hospital has grown to include:

- 48 private inpatient beds
- 23 Pediatric Intensive Care Unit beds
- A 17-bed dedicated Pediatric Emergency Department
- A comprehensive system of outpatient specialty practices

Our **97 bed Neonatal Intensive Care Unit is the largest in the state of Indiana**, which provides the highest level of care to our smallest patients.

You can play a vital role in providing hope for a cure, healing, and restoration of health through your donations to support Peyton Manning Children's Hospital. In this booklet you will find an overview of current funding priorities that play a crucial role in ensuring the highest quality care of all patients.

Patient Therapies & Programs



**Peyton Manning
Children's Hospital**

Ascension St. Vincent



Child Life

A Child Life Specialist is a member of the healthcare team who is specially trained to help children and their families understand and manage their time in a hospital, including pediatric cancer patients. The Child Life team at Peyton Manning Children's Hospital at Ascension St. Vincent enhances the patient experience in a variety of ways, such as providing techniques for pain management and relaxation to minimize fears and improve coping skills. Child Life Specialists also utilize distraction techniques and interact with other children such as siblings.

Philanthropic funding for Child Life Services is utilized to acquire toys, medical dolls and demonstrations, and other material or programmatic needs to support this important component of patient-centered care.



**Peyton Manning
Children's Hospital**

Ascension St. Vincent

Healing Arts



The Healing Arts Program promotes holistic healing through a combination of visual art, music, and dance/movement therapies. As more research continues to show the benefits of artistic expression for hospitalized individuals, it is becoming increasingly clear that these therapies help in the physical and emotional healing process for patients.

Artistic expression has been found to be especially useful for patients who are facing a serious illness with a lengthy treatment and recovery road. Healing arts therapies have also been proven to help reduce stress and anxiety for their families and for healthcare professionals.

Annual expenses for the Healing Arts Program total approximately \$300,000. Due to the nature of the services provided, the program's revenue generating capacity is limited so it relies largely on philanthropic gifts and contributions in order to operate and grow.



**Peyton Manning
Children's Hospital**

Ascension St. Vincent

School Program

The School Program features a full-time teacher who provides direct instruction and assistance to patients who must miss significant time from school due to a long-term hospitalization or frequent visits to the hospital for rehabilitation or treatment. The program can offer instruction in a structured classroom setting if the patient is able, or direct bedside help and instruction for patients. The teacher also serves as a liaison between the patients and their regular school teachers back home, which is especially important in cases where an illness or injury may impact learning ability, emotions and behavior.



The ultimate goal is for all patients who require educational instruction or assistance during their hospitalization to successfully re-acclimate to their home schools with minimal difficulty.

The School Program relies heavily on philanthropic support to cover its annual operational expenses of approximately \$90,000.



"Ascension St. Vincent should consider themselves blessed to have such an amazing teacher on staff. I can't imagine what we would have gone through had this program not been in place."



**Peyton Manning
Children's Hospital**

Ascension St. Vincent

Equine Assisted Therapy

While many forms of rehabilitation may be long and uncomfortable, one form that has proven to be both effective and enjoyable for many young patients is Equine Assisted Therapy. This therapy utilizes the movement of the horse as a treatment strategy in physical, occupational and speech-language therapy sessions for children living with disabilities.



Through its partnership with Agape Therapeutic Riding Resources, Ascension St. Vincent Pediatric Therapy Services currently provides four 10-week Equine Assisted Therapy Programs throughout the year. Children participate in the program once each week during the 10-week program. Each individual session is 60-minutes and is staffed with one physical therapist, one occupational therapist, and one speech therapist. During sessions, a child receives 30-minutes of equine assisted therapy and 30-minutes of traditional land therapy services.

The annual cost of this program is \$56,000. Your investment will support a form of therapy that results in significant success in the physical development of pediatric patients and provides an incredible emotional benefit for both the patients and their families.



**Peyton Manning
Children's Hospital**

Ascension St. Vincent

Behavioral Health

Ascension St. Vincent provides a combination of behavioral and mental health programs and services. Its capabilities include treatment and care for a variety of diagnoses, including substance use disorder. Most conditions are treated with outpatient services, but inpatient treatment is also provided at the Ascension St. Vincent Stress Center in Indianapolis. The Anderson Center and Anderson Center Outpatient Services also offer specialized treatment for persons with addictive diseases and mental illnesses, including youth.

Children and teenage patients are referred to the most clinically appropriate program based on their diagnosis. Options include:

- Inpatient hospitalization for ages 6-18: One of five mental health inpatient units in Indiana for children
- Partial hospitalization and Intensive Outpatient Programs (IOP) for dual diagnosis and mental health services (segmented by age groups)
- Prime for Life: A drug and alcohol education program for behavioral change for ages 13-18
- Therapeutic Day School Program for ages 6-18

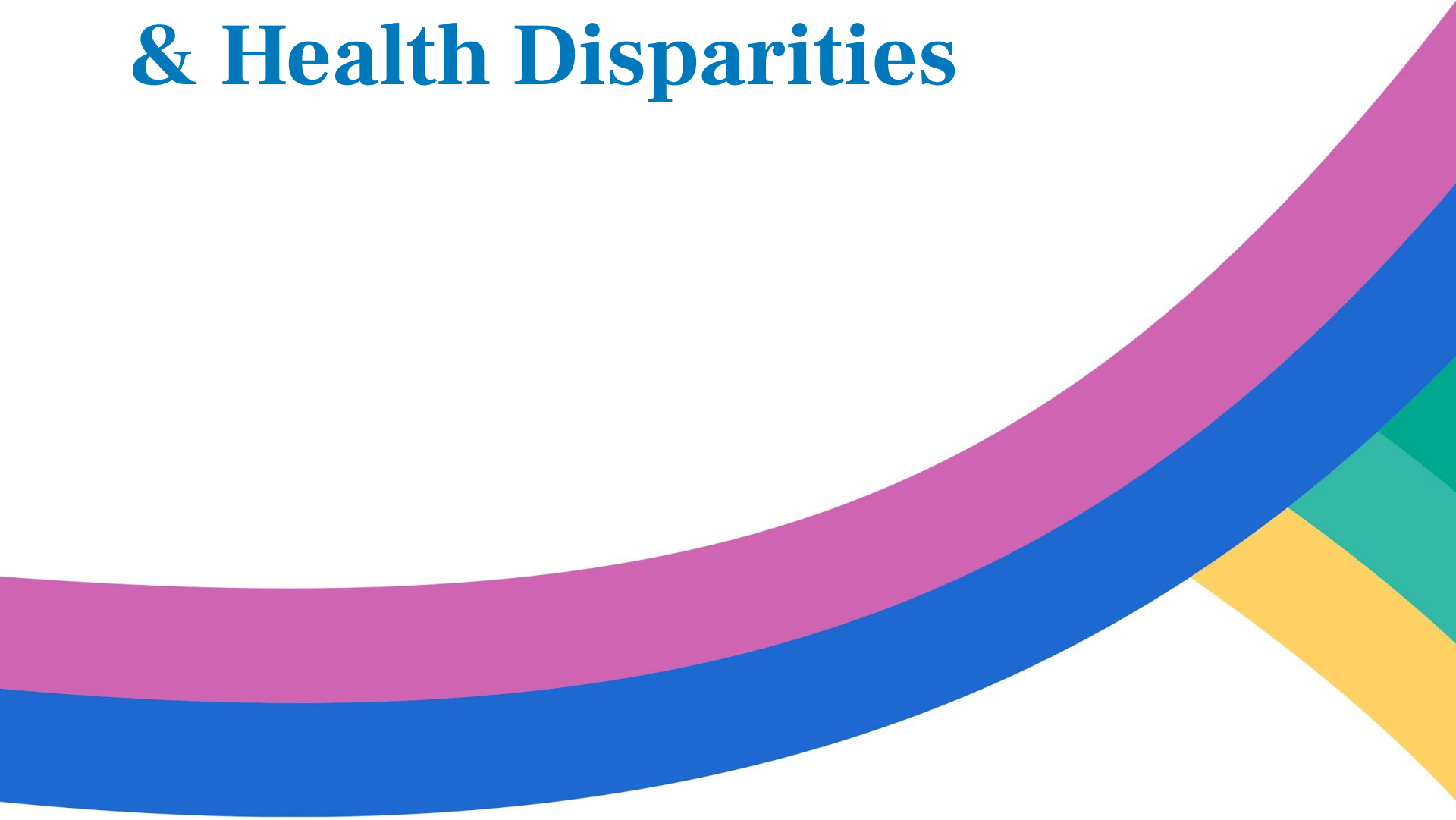
Philanthropic support is utilized for programmatic and capital needs to ensure that all patients receive the best possible evidence-based treatment and care for their behavioral health needs.



**Peyton Manning
Children's Hospital**

Ascension St. Vincent

Research, Education & Health Disparities



Pediatric Cancer Research

The Children's Center for Cancer and Blood Diseases at Peyton Manning Children's Hospital at Ascension St. Vincent participates in pediatric cancer clinical trials and research through the Children's Oncology Group (COG), as well as industry funded trials. Philanthropic funding facilitates this participation by providing pediatric cancer patients with access to new testing, treatments and medications that are not covered by insurance. This ensures that every patient has equal opportunity to benefit from access to promising advances in pediatric cancer care.

The Center's patient-centered and multi-disciplinary approach to treatment means that every new oncology patient is evaluated for open clinical trials to determine the best course of treatment. With the support of philanthropic partners, each patient can be provided with the most current and up-to-date treatment options and information for their cancer diagnosis.



**Peyton Manning
Children's Hospital**

Ascension St. Vincent

Healthcare Education & Simulation Center

Healthcare in our community and nationally is undergoing tremendous change, making it more important than ever for current and aspiring healthcare professionals to have access to up-to-date healthcare education and training opportunities. The William K. Nasser, MD, Healthcare Education and Simulation Center at Ascension St. Vincent is addressing this urgent need through state-of-the-art education technology.

Simulation is a major focus of the Center, which features 'flexible' spaces that can be modified constantly to simulate realistically an operating room, an intensive care unit, a labor/delivery room, or any number of other medical settings. It is also outfitted with high-tech responsive manikins and task specific tools, giving participants the look and feel of real patients and procedures. The Center also includes classroom spaces which are utilized for more traditional instructor-led education and training opportunities.



Support of the William K. Nasser, MD, Healthcare Education and Simulation Center at Ascension St. Vincent promises to impact patient outcomes in our community and far beyond.



**Peyton Manning
Children's Hospital**

Ascension St. Vincent

Infant Mortality

Infant mortality has been a significant issue in Indiana for many years, with rates consistently exceeding national averages. These troubling statistics represent the motivation behind the creation of the Ascension St. Vincent Infant and Maternal Health Advocate program.

The primary feature of the program is a full-time Infant and Mortality Health Advocate position. This purpose of this position is to build relationships with at-risk and vulnerable mothers and serve as a resource for information and as a patient advocate to ensure they have access to the quality healthcare they need and deserve. Research has confirmed the importance of accessing quality care as early as possible during a pregnancy. With this goal in mind, the Advocate meets with pregnant moms through numerous avenues and works directly with them to schedule prenatal appointments as appropriate, and also follows up with them throughout labor and delivery, and postpartum.

The program is producing effective reach and positive results, but much more work is needed. Continued philanthropic support is needed to facilitate additional growth. Specific goals for the near future include the expansion of community outreach efforts and other activities to build more community awareness of the program. The creation of parenting support groups for participants is also desired to give them opportunities to share their experiences, learn from each other, and support each other.



**Peyton Manning
Children's Hospital**

Ascension St. Vincent

Family-friendly Environments, Services & Advanced Medical Technology



**Peyton Manning
Children's Hospital**

Ascension St. Vincent



Ascension St. Vincent House



The Ascension St. Vincent House provides home-like accommodations and other practical resources for families of Ascension St. Vincent patients from outside Central Indiana, especially for those who face financial barriers, so they can focus on the healing and needs of their loved ones.

It includes 20 residential units, along with other amenities that support the 'home away from home' intent of the facility, including:

- Kitchen and dining area
- Laundry facilities
- Family room
- Playroom
- Areas for meditation and reflection

Annual operating costs for the Ascension St. Vincent House total approximately \$700,000 and are covered almost solely by philanthropic support. By partnering with Ascension St. Vincent to support this caring facility, you will help provide rest for those who are weary, and the love and support of family for those who are lonely.



**Peyton Manning
Children's Hospital**

Ascension St. Vincent

Newborn Intensive Care Unit (NICU)

The NICU at Ascension St. Vincent offers the largest Level IV NICU in the state and provides comprehensive care for newborns from throughout Indiana and even surrounding states. It features 75 acute care beds, 12 intermediate care beds and 10 continuing care beds. It also includes an onsite newborn ECMO for babies with severe lung conditions. Due to the broad geographic reach of these NICU services, Ascension St. Vincent and Peyton Manning Children's Hospital also coordinate ground and air transport for newborns.

Philanthropic support is needed to enhance the level of comprehensive, holistic care provided to NICU patients and their families.

This includes initiatives that enhance the patient experience, such as *NICVIEW* cameras that allow parents to observe their babies through any device that has access to the internet such as computers, tablets, and even phones. This helps reduce anxiety and provide additional peace of mind by allowing parents to view their babies at any time they cannot be with them.



**Peyton Manning
Children's Hospital**

Ascension St. Vincent

Patient Financial Support

In keeping with the Mission and Core Values of Ascension St. Vincent, nobody is ever refused care and treatment due to an inability to pay. Donors who share this same desire to help those less fortunate are welcome to make charitable contributions to efforts to support patients from poor and vulnerable populations. These donations help ensure that all patients receive the highest levels of compassionate and holistic care. This can include personal touches as simple as a gift card or a ride-share arrangement to help them get to a doctor's appointment. It can also include financial support to help cover the expenses of medical procedures or treatment.

Philanthropic contributions also support the Ascension St. Vincent Rural and Urban Access to Health (RUAH) program, which is a community based care coordination program. The purpose of RUAH is to connect patients to a comprehensive, integrated delivery network of health, human and social services resulting in improved access and removal of barriers to needed resources. RUAH health advocates help patients connect to care by finding a doctor, applying for health coverage programs, connecting to community resources and agencies, and providing prescription assistance programs.



**Peyton Manning
Children's Hospital**

Ascension St. Vincent

Thank you!

The initiatives described in this booklet represent current fundraising priorities for Peyton Manning Children's Hospital at Ascension St. Vincent Foundation. More information about any of these needs can be provided by a member of the Foundation staff.

We are extremely grateful for the philanthropic support of thousands of partners who share a desire to support the healing ministries and the mission of Peyton Manning Children's Hospital.

Ascension St. Vincent Foundation
give.stvincent.org
317-338-2338



**Peyton Manning
Children's Hospital**

Ascension St. Vincent